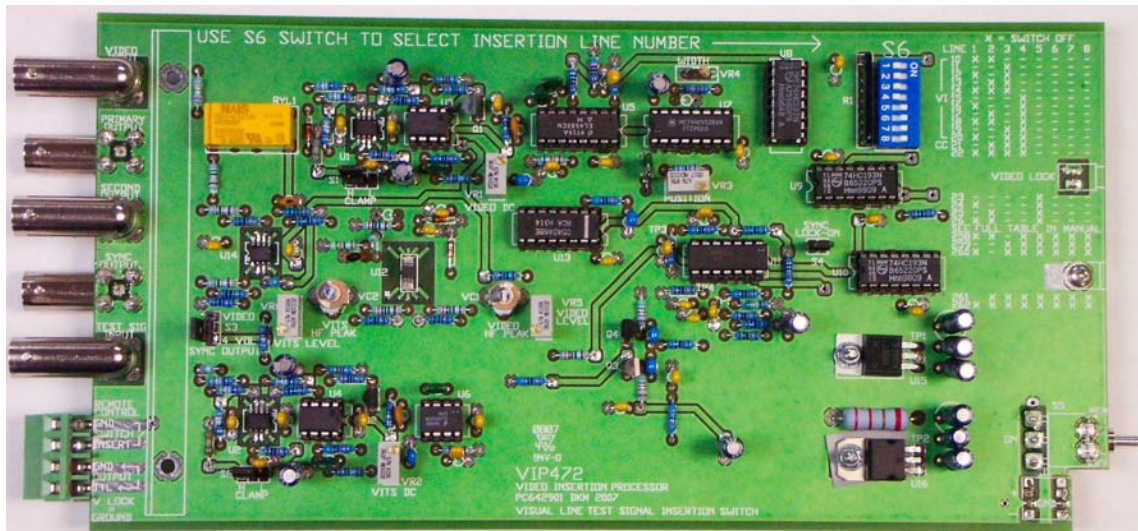


VIP472



VIDEO LINE INSERTION PROCESSOR

The VIP472 is a line switcher that will insert any one video test signal line onto your NTSC video path so that you can monitor the transmission signal quality. This process allows the video test signal to pass through all digital compression systems to verify that your video is being delivered accurately without distortion.

Most digital transmission systems will not pass the vertical interval. This system replaces the Vertical Interval Test Signals "VITS" and Vertical Interval Reference Signals "VIRS" that were used to monitor video quality, but are now lost due to digital compression.

This process momentarily inserts a video test signal onto a visual picture line at the top or bottom of the screen where it is least noticeable. The test signal is only on during the test and then turned off for normal video operation. You may select any line of video for test signal insertion by using a "dip" switch on the PC Card.

The unit has two BNC connector video inputs, one for the video and the other for the video test signal generator. A BNC connector "SYNC" output signal is provided to lock-up your test signal generator if needed. A secondary video output BNC connector is also provided on the main channel.

Line insertion is controlled by the front panel switch. This switch allows you to turn the insertion "ON/OFF" and select "REMOTE". The "REMOTE" feature allows you to connect an external switch to the screw terminal connector, to control the insertion. There is an LED on the front panel to indicate video lock between main channel and the test signal generator. The unit also has a TTL output to indicate the video lock status remotely. In the event of a power failure the main video is by-passed to the primary output.

VIP472

The VIP472 is a PC card that fits into one of 9 slots in the RMS400 Power supply and Mainframe. The RMS400 is a 19.00" X 5.25" industry standard rack mount that will hold all 400 series products. This card will also fit into the SAM400 "Stand Alone Mount" one card mounting system.

FEATURE

SPECIFICATIONS:

INPUT

Main Video	1 Vpp Standard Video
Test Signal Video	1 Vpp Standard Video
Impedance (All Video)	75 Ohm (Unbalanced)
Video Standard	NTSC, B/W or Color
Common Mode Rejection	50 dB Minimum (60Hz)
Connectors	BNC (Female) 75 Ohm
Remote Control	2 Position Screw Terminal

OUTPUT

Main Video	Same as Input (Unity)
Test Signal Video	Same as Input (Unity)
Sync Output	4 Volt Sync or Video (Selectable)
Impedance (All Video)	75 Ohm (Unbalanced)
TTL Sync Lock (Remote)	2 Position Screw Terminal
Signal-to-noise ratio	\leq 75db (NTSC Weighing)
Differential gain	\geq 0.1%
Differential phase	\geq 0.1 Deg

CONTROL

Video Clamping	Back Porch (High/Low Selectable)
Switch Front Panel	Three Position Toggle (On/Off/REM)
Remote Control	Contact Closure

POWER REQUIRMENT

Power	+/- 12VDC 100 mA (RMS400/SAM400)
-------	----------------------------------

MECHANICAL

Size	10.00" L x 4.80" W x 1.20" D
Display Indicator	Green "VIDEO LOCK" L.E.D.
Mounting	Slide-In PC Card (RMS400)