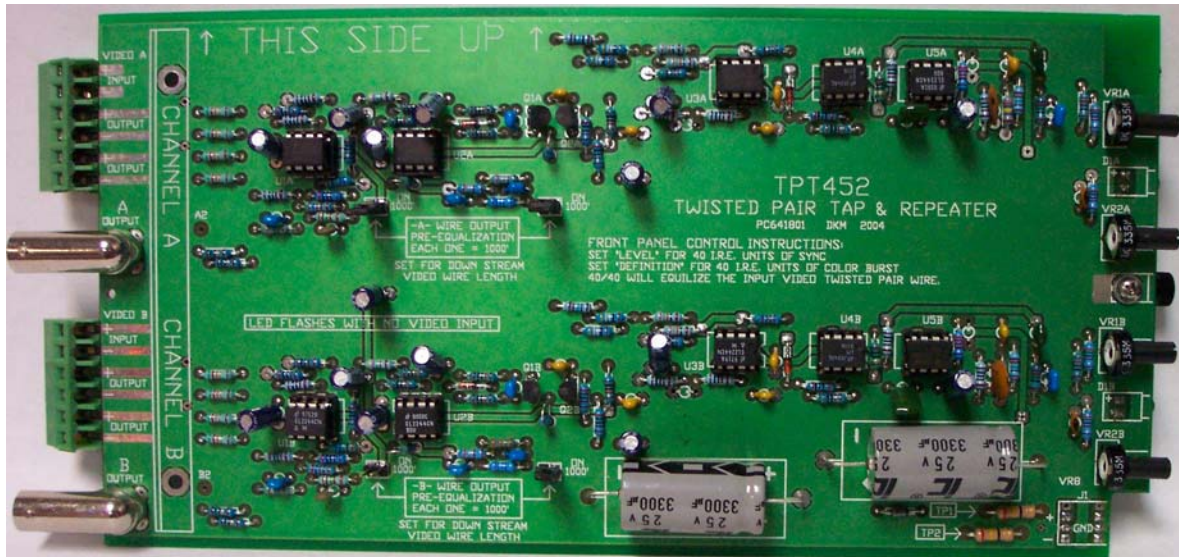


# TPT-452



## RACK MOUNT VIDEO TWISTED PAIR REPEATER TAP

The TPT-452 Twisted Pair Tap Repeater is a dual channel amplifier used to equalize video over twisted pair wire gages 18 to 24 AWG. The unit has one twisted wire video input per channel, two BNC Taps or "drops" to use for a local monitor and two twisted pair video outputs per channel (a distribution amplifier) so that the unit can drive two separate video lines with the same camera picture. This unit is used in the middle of a long twisted pair wire installation to extend the transmission range of the video signal up to 4000 feet.

This unit is compatible with all other twisted pair sender and receiver units. The distance is set using field programmable jumpers and front panel adjustable equalization controls for both high and low frequency.

Each video input has a screw terminal connector for the twisted pair wire. The video drop has a female BNC connector that takes the place of a video balun. Two screw terminal connectors are used for the dual twisted pair video distribution output.

The video input uses a true common-mode rejection system that eliminates interfering signals and ground-loop problems. Controls for both Video Level and Picture Definition can be adjusted to correct for twisted pair wire loss making the video output (BNC Drop) correct.

The TPT-452 "Pre-Equalizes" the twisted pair transmission path to reduce video noise and improve the video image. Because it is an active device it will correct the twisted pair wire impedance of the incoming video signal and produce the precise impedance to correctly match the twisted pair wire. A correct match on the twisted pair wire will prevent reflections and ghosting in the video picture.

# TPT-452

## RACK MOUNT VIDEO TWISTED PAIR REPEATER TAP

### INPUT

	SPECIFICATION
Channels	2
Level	1 Volt Peak/Peak Nominal
Impedance	105 Ohms
Video Standard	CCTV, NTSC, PAL
Common Mode Rejection	50 dB Minimum
Connectors	Screw Terminal
Equalization Distance	0-2000 feet

### PROCESSING

Input Distance (Adjustable)	0 - 2000 feet
RF Bandwidth	10 MHz

### DROP (TAP) OUTPUT

Channels	2
Level	1 Volt Peak/Peak
Impedance	75 Ohm
Connector	BNC (Female)
Signal to Noise Ratio	70 dB

### OUTPUT

Channels	2
Outputs Per Channel	2
Level	1 Volt Peak/Peak
Impedance	105 Ohm
Connector	Screw Terminal
Equalization Distance	0-2000 feet
Signal to Noise Ratio	70 dB
Total Equalization Distance	0-4000 feet (Input-Output)

### MECHANICAL

Size	5.5" L x 3.3"W x 2"D
Mainframe Requirement (RMS400)	1 Slot
Power Requirements	+/- 12 VDC (RMS400)