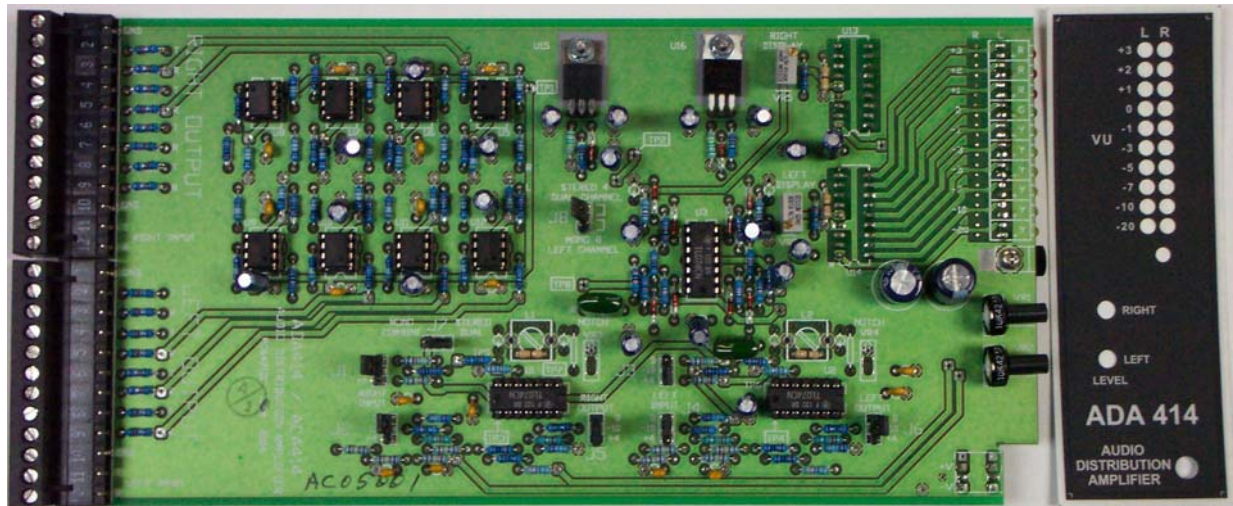


ADA414



STEREO AUDIO DISTRIBUTION AMPLIFIER

The ADA414 Stereo Audio Distribution Amplifier is a Dual channel Left and Right audio input, 4 audio outputs per channel distribution amplifier. The inputs and outputs are balanced to provide common mode suppression of hum and 60 cycle ground loops. The unit will accept balanced or un-balanced audio signals.

Each input has 3 field select input ranges and an adjustable front panel control for level setting. The output channels have 3 field select ranges to choose from, -10dBm, 0dBm, and +4dBm APL (Average Program Level).

A 10 Segment Dual LED VU meter on the front panel allows the operator to precisely set each input level for the correct APL output.

The master level controls on the front panel can be used for periodic adjustment of the system level. The output impedance is also very low, so that output levels are not sensitive to load impedance variations. This also prevents frequency response variation on long cable runs. The unit is completely compatible with 600 Ohm impedance systems.

This audio distribution amplifier can be used to combine a left and right stereo audio channel to form mono while maintaining the stereo separation at the audio input.

The unit can be converted into a single channel mono input, 8 channel output Distribution Amplifier by selecting a jumper on the pc board. This versatility of configuration allows the operator to use the same unit in many different applications.

An optional 15,734 Hz or 19,000 Hz notch filter may be ordered to prevent high level video or multiplex artifacts from entering the distribution output.

ADA414

STEREO AUDIO DISTRIBUTION AMPLIFIER

<u>FEATURE</u>	<u>SPECIFICATION</u>
INPUT	
Channels	2 Left/Right or Dual Audio
Connection	Balanced or Un-balanced
Impedance	Hi-Z Bridging
Common Mode Rejection	50 dB minimum, 60 dB average
Audio Level (APL)	-10 dBm, 0 dBm, +4 dBm (selectable)
Audio Level (PPL)	0 dBm, +10 dBm, +14 dBm
Headroom Maximum Level	+20 dBm (Clip Point)
Meter Type	10 Segment Color LED Peak VU
Meter Response	DIN 45406 PPM Specification
OUTPUT	
Channels	8 (mono) or 4 (stereo)
Connection	Balanced or Un-balanced
Impedance	Low Z, to drive 600 ohms
Audio Level (APL)	-10 dBm, 0 dBm, +4 dBm (selectable)
Audio Level (PPL)	0 dBm, +10 dBm, +14 dBm
PROCESSING	
Frequency Response	20 Hz - 20 KHz +/- 0.2 dB
Distortion	0.05% THD Maximum
Signal to Noise Ratio	80 dB Minimum
POWER REQUIREMENT	
Power	+/- 12 VDC 150 mA (RMS400)
MECHANICAL	
PC Card Size	10.00" L x 4.80" W x 1.20" D
Mounting	Slide-in PC Card (RMS400)