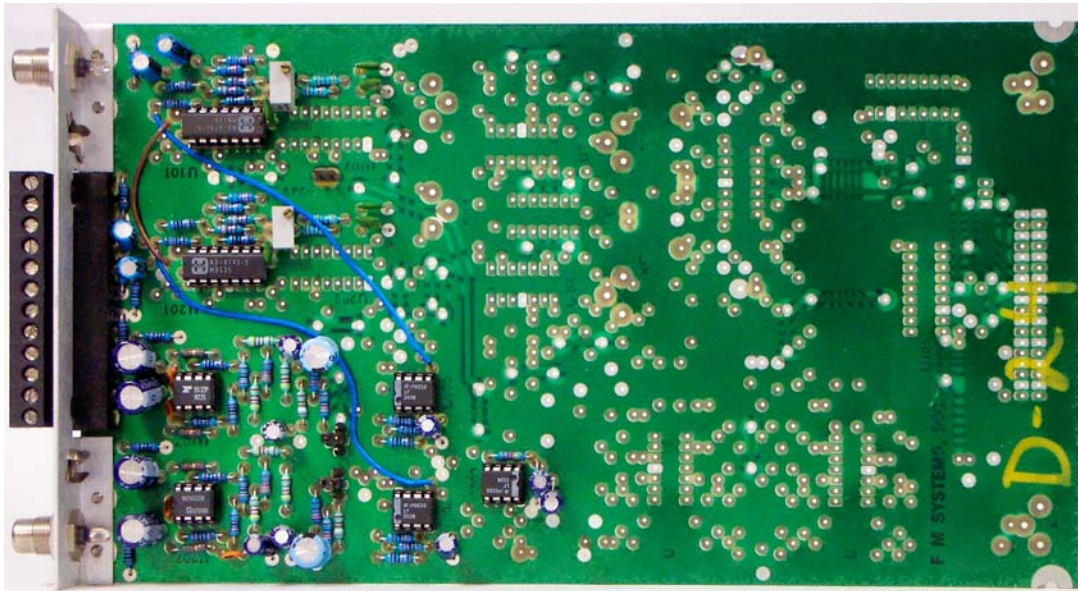


# ACA612



## AUDIO COMBINING AMPLIFIER

The Audio Combining Amplifier takes two inputs and combines them into one single audio output. It maintains isolation between the original inputs. This is commonly used to combine stereo to mono.

The ACA612 Audio Combining Amplifier has two audio outputs. The outputs are balanced so that it can drive either a balanced or an unbalanced load. The outputs may be adjusted over a 6 dB range to trim levels into differing load impedances and line losses, and a master gain selector is provided to set overall gain. The output impedance is also very low, so that output levels are not sensitive to load impedance variation. This also insures minimal frequency response variation on long cable runs.

This unit fits into a PMS610 Mainframe and power supply. The PMS610 is a standard 19" rack mounted mainframe and can hold three of these or any "600" series products. It is powered by 120 VAC and supplies the -24VDC needed by the ACE612 Audio Combining Amplifier.

**SPECIFICATIONS :**

Input	Balanced or Unbalanced
Input Impedance	600 ohms or 200K bridging
Input Common Mode Rejection	50 dB minimum
Input Level (APL)	0 to +8 dBm
Input Level (PPL)	+10 to +18 dBm
Outputs	Two Balanced or Unbalanced
Output Impedance	Low Z, to drive 600 ohms
Output Level (APL)	0, +4, +8 dBm
Output Level (PPL)	+10, +14, +18 dBm

**THROUGH-PUT :**

Frequency Response	20 Hz - 20 kHz, $\pm$ 0.2 dB
Distortion	< 0.25%
Signal-to-Noise	80 dB
Head Room	+22 dBm

**MECHANICAL**

Size	9.50"L x 5.50"W x 1.00"D
Power	-24VDC @ 100mA
Audio Connector	12 Position Screw Terminal